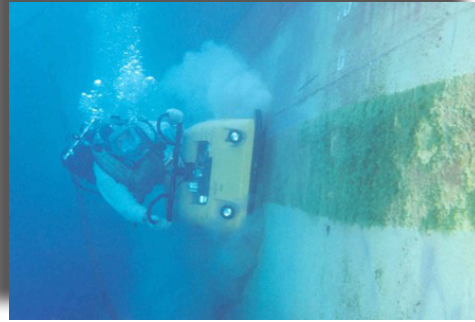




# Portland Port Newsletter

Volume #1 | Issue 12 | June 2011

## Vessel Services at Portland Port



**If you are looking for a convenient stop along the south coast where you can carry out quick crew change or essential in-water maintenance then Portland Port really is the answer.** With minimal deviation from the main EC maritime trade routes, Portland offers clear, sheltered and deep water for vessels. Plus Portland's Inner Anchorage is an approved site

by all major Classification Societies to carry out In Water Surveys and also provides ideal conditions for underwater hull cleaning, propeller polishing and repairs. Portland has the 'One Stop Shop' discounted tariff, designed with the ship owner/operator in mind, offering a cost effective solution for calls up to 24hrs at anchor. For more information on the services available please visit [www.portland-port.co.uk/shipping/Underwater-Services](http://www.portland-port.co.uk/shipping/Underwater-Services)

### Inside This Issue

1 Vessel Services at Portland Port

2 Refurbishment of Queens Pier

3 Breaking News

**Portland Port launch brand new website...**

4 Super Yachts

5 Cruise News

6 Portland Port Charity Challenge

7 50 ton crane(less) berth!

8 Portland Port Tenants

9 RMS St Helena

Portland Port Ltd  
Port Office  
Castletown  
Portland  
Dorset  
DT5 1PP  
United Kingdom



## £3.5 million spent on maintaining pier

**WEYMOUTH and Portland's economy is set for a multi-million pound boost thanks to Portland Port's £3.5 million refurbishment of Queen's Pier.**

Work to maintain, conserve and extend the pier will allow more large vessels, such as the RFA bay class, as well as commercial and cruise ships to moor along the quayside in Portland.



Contractors Kier Construction say the work will also benefit the borough's economy because they want to hire local workers to make the scheme happen. The work, which started in the spring, is due to finish by late summer. Project manager David Hallett said the work involved large steel piles being hammered into the seabed by a crane floating on a pontoon. He added: 'Queen's Pier is a mature structure that has been there since the 1950s and is in need of a bit of TLC. We are taking great care to make sure we do not disrupt over-wintering birds at the Fleet, Ferrybridge and Chesil Beach. We also have to demonstrate that we are not going to upset the shellfish by disturbing the mud.' Chief Executive of Portland Port, Steve Davies, said: 'The refurbishment of the Queen's Pier benefits the local community through employment and spending, both during and after construction, as more business is encouraged to pass through the port. It gives the port a competitive advantage with facilities to attract more international shipping contracts, which adds a benefit for the wider economy of the South West.'



Tel: +44(0)1305 824044  
Fax: +44(0)1305 824055  
[sales@portland-port.co.uk](mailto:sales@portland-port.co.uk)

## Portland Port launch new website



**PORTLAND Port has made a splash with its new website - and the ripples are reaching global players in the commercial and leisure shipping industry.**

New features include a completely fresh landing page and a specialist section catering for the hundreds of super yacht owners who wish to bring their 50ft-plus vessels to South West waters, famed for hosting high-profile regattas. Corporate videos, such as the film of a large cruise liner docking at the Port and the excursions on offer for passengers, are embedded on YouTube with a click-through from the Port site. The tender to redesign the old website was won by a Dorset firm, Alacrify Ltd of Maiden Newton, near Dorchester. Jon Sloper, Managing Director of Alacrify, said: 'The challenge for us was helping Portland Port project its brand in a way that is both contemporary and up-to-date, while retaining a sense of tradition that reflects the slightly more conservative qualities of the international shipping market. Our set of ideas will enhance the brand identity of Portland Port, and project it as a leading channel port in the twenty-first century.' Alacrify created a new visual design for the website while keeping the existing Portland Harbour Authority Logo and colour scheme. It has installed action links with strong pictorial narrative - telling stories in pictures to assist with quick navigation. Jon added: 'The site presents distinct and immediately recognisable topics making strong visual associations with the sea, shipping and Port services using contemporary styling with a clear, clean and classy design.' Take a look at Portland Port's new website: [www.portland-port.co.uk](http://www.portland-port.co.uk)

---

## Super Yachts

**If sailing the Olympic Waters is on your list of things to do in 2012, then it will be useful to know that Weymouth and Portland will be hosting the sailing events of the Olympic and Paralympic Games.**

For a period of time in July, August and September in 2012, areas of waters in Weymouth Bay and Portland Harbour will host the race courses for the sailing events.



To enable safe and secure sailing for the world's top sailing athletes, some restrictions will be necessary. However there will be designated berths and anchorages available for superyachts, with access to the harbour available at all times, via a defined access channel. Portland has berths available for vessels with drafts up to 7m. Portland has been a popular choice for yachts wishing to carry out essential maintenance, offering privacy and security that some neighbouring ports are unable to provide. Portland is also ideally placed as a transit stop between the Solent and Falmouth for yachts participating in one of the many internationally renowned regattas. For more information visit our website [www.portland-port.co.uk/leisure/super-yachts](http://www.portland-port.co.uk/leisure/super-yachts)

Portland Port Ltd  
Port Office  
Castletown  
Portland  
Dorset  
DT5 1PP  
United Kingdom





Tel: +44(0)1305 824044  
Fax: +44(0)1305 824055  
[sales@portland-port.co.uk](mailto:sales@portland-port.co.uk)

Portland Port Ltd  
Port Office  
Castletown  
Portland  
Dorset  
DT5 1PP  
United Kingdom



## Cruise News

**DORSET is set to welcome thousands of tourists to its shores as Portland Port emerges as a top cruise destination for worldwide operators this summer.**

Portland Harbour Authority Limited (PHAL) sales and marketing specialists have become international ambassadors for the Port after attending events such as the 2011 Cruise Shipping Miami Conference in Miami Beach. They are dealing with increasing numbers of enquiries from industry giants ahead of the 2012 Olympic and Paralympic Games. As Portland Port is home to the sailing events of the 2012 Olympic and Paralympic Games, berths for cruise ships are available for the duration of the games – and many operators are interested in the opportunity to arrange Olympic Games-based itineraries to take in both London and Portland.



Portland is already popular as a cruise destination because it offers operators the chance to line up passenger excursions to castles, stately homes, museums, country gardens and golf courses along the Jurassic Coast and beyond – to locations such as Stonehenge, Bath and Salisbury Cathedral. Last year, the Port attracted nearly 8,000 visitors after winning contracts with cruise firms such as Holland America Line, Crystal Cruises, Oceania Cruises and Phoenix Reisen. A roll-call of prestigious vessels have already called into Portland this year, which includes: Sea Cloud Cruises, Saga and Cruise and Maritime Voyages. The rest of 2011 is set to bring calls from Peter Deilmann and Hebridean Island Cruises. The Port's Commercial Manager, Ian McQuade, said: 'Getting Portland on the radar of industry giants such as these operators is a crucial boost to the South West economy. Cruise operators are increasingly choosing us because we have the facilities in place and proven capability to handle large cruise vessels, plus the region offers their passengers so much.' Sales and Marketing Executive, Amanda Milner, said: 'Portland Port is perfectly located on the south coast of England offering a gateway to some of Britain's most stunning, fascinating and unique inland attractions that are ideal for day call visits for the discerning cruise customer.' For more information about cruise, including facilities and attractions, plus our cruise video, visit the Portland Port website: [www.portland-port.co.uk/cruise](http://www.portland-port.co.uk/cruise)



Tel: +44(0)1305 824044  
Fax: +44(0)1305 824055  
[sales@portland-port.co.uk](mailto:sales@portland-port.co.uk)

Portland Port Ltd  
Port Office  
Castletown  
Portland  
Dorset  
DT5 1PP  
United Kingdom



## Portland Port Charity Challenge



Each year Portland Harbour Authority sponsors local charities, organisations and individuals in the Weymouth & Portland area. Some of the recent beneficiaries include Weymouth & Portland Friends of Chernobyl Children, the Portland branch of the Dorset Association for the Disabled, various local children's sports clubs and the Royal Manor Theatre Group. On 25 June 2011,

a team from Portland Harbour Authority will be taking on the "Hadrians Wall Trekathon" to raise funds for the Portland branch of the St Johns Ambulance. The team of two men and four women will be taking on a tough 26 mile walk over hilly landscapes, which is estimated to take about 8-9 hours. The team - called the 'Harbour Hikers' - are hoping to raise over £3,000 for the Portland branch of St Johns Ambulance, who are hoping to buy a new ambulance chair and other essential equipment for their new building. The venture has got the thumbs-up from Terry Shakespeare, Superintendent at Portland St John's Ambulance, who said: 'All Portland St John Members are really grateful for the way that the Portland community are behind us and support us. All our funds come from donations at first aid duties, donations from individuals and groups and our own fundraising. We are really impressed with what the team from Portland Harbour Authority are doing for us, this money could make the difference between a life lost and a life saved.' Appealing for sponsorship, the Harbour Hikers said: 'We would be really grateful if businesses and individuals supported us by logging on to our sponsorship page - [www.justgiving.com/portland-port](http://www.justgiving.com/portland-port).

## 50 ton crane(less) berth!

**Portland Port's last standing dockside crane was dismantled and taken down from its berth in April 2011.**

The 50 ton crane at Portland Port, was a fixed crane, attached to the Inner Breakwater and equipped with a winder, wire ropes and sheaves. It was used to both lift and lower freight associated with shipping, as well as move it horizontally. However, it had limited use, only being utilised around 10 times in five years. The '50ton crane' ceased to operate over five years ago due to health and safety reasons, and in 2008, experts found the crane was unsafe and beyond economical repair, and recommended it was dismantled and taken down.



Ian McQuade, Commercial Manager of Portland Harbour Authority, said: 'The removal of the crane allows Portland Port to offer the berth where the crane once stood to more incoming vessels, such as cargo ships. It has also opened up the berth to a larger quay area, which is ideal for handling cargo.' The berth is also ideal for accommodating lay-ups. Maximum draft is 5.4m close alongside the berth; however with additional fendering, depths of up to 8m are achievable. Vessels with 120m LOA can go alongside. Vessels with a larger LOA can be accommodated with the Harbour Masters approval, and is subject to other activity taking place around the berth. For more information about the berth, or for any enquiries please contact [sales@portland-port.co.uk](mailto:sales@portland-port.co.uk) or call +44 (01305) 824044.



Tel: +44(0)1305 824044  
Fax: +44(0)1305 824055  
sales@portland-port.co.uk

Portland Port Ltd  
Port Office  
Castletown  
Portland  
Dorset  
DT5 1PP  
United Kingdom



## UMC News



UMC experienced an upturn in activity with meeting the requirements of more than 6 vessels calling to the sheltered, clear waters of Portland Inner Anchorage during April 2011, with operations including underwater hull cleaning, in water Surveys, underwater propeller polishing and hull repairs. UMC have also expanded its range of services to meet the demand of the maritime industry and are now able to arrange radio servicing and certification, life boat and elevator maintenance and boiler cleaning. All complement their existing range of underwater services on vessels calling to this location. For more information visit [www.portland-port.co.uk/shipping/Underwater-Services](http://www.portland-port.co.uk/shipping/Underwater-Services)

## Manor Marine News



Manor Marine currently have three anti-pollution vessels under construction. Two of the vessels are 19m long and the other vessel is 15m long. They are all for export this year. Both slipways are booked for various refits during the summer of 2011, and they also have MoD vessels alongside their berth undergoing maintenance work. For more information about manor marine please visit their website: [www.manormarine.co.uk](http://www.manormarine.co.uk)

## Global Marine Systems News

Global Marine Systems and its first U.S. distribution partner, Great Eastern Group, have announced that the innovative Inspection Class ROV 'Predator' is now available for sale in the U.S. market. With a user-friendly, modular design, Global Marine Systems' 300m rated Inspection Class ROV system Predator was developed to meet the ever-demanding markets for rugged and reliable underwater viewing and survey systems. Designed and built at its Portland facility, the Predator uses the very latest high-reliability technology to ensure maximum operating efficiency for a number of marine operations from the inspection of submarine cables, harbour and inland waterways, to civilian and military search and rescue applications. For more information about Global Marine Systems, please visit their website: [www.globalmarinesystems.com](http://www.globalmarinesystems.com)



## RMS St Helena



**The RMS St Helena, one of the last working Royal Mail Ships in the world, returned to Portland Port in March 2011.** The vessel has been calling into Portland for approximately 10 years, utilising the facilities available to her at the port. The vessel calls twice a year, usually staying alongside for 5-6 days. The Royal Mail Ship uses Portland to discharge and load cargo, as well embark and disembark passengers. Portland Port has perfect facilities to support this type of operation, such as large quay space, covered warehousing and craneage and haulage services operated by on-site contractors. Portland Port looks forward to welcoming back the RMS St Helena in October 2011.