



# PORTLAND HARBOUR AUTHORITY LIMITED



## Local Notice to Mariners

No 15/2020(T)

### **TOWING TRIALS AND UNDERWATER OPERATIONS No 2** **(Continuation)**

Trial Dates	3 <sup>rd</sup> August to 30 <sup>th</sup> November 2020
Trial Times	Daylight Hours
Trial Location	Portland Inner & Outer Harbour and Weymouth Bay
Trials Vessel	ARCIMS 09, ARCIMS 10
Support Vessels	SAFETY RHIB

ATLAS ELEKTRONIK UK (AEUK) will be conducting Towing Trials from 3<sup>rd</sup> August to 30<sup>th</sup> November 2020.

The towing vessel will be running pre-determined tracks and will be restricted in ability to manoeuvre.

The trial will consist of towing equipment extending out to 45m astern of the towing vessel.

Beyond the harbour limits the tow can extend up to 200m from the towing vessel.

The area of operation within port limits is shown on the chart below

Towing Shapes will be displayed from the ARCIMS platforms.

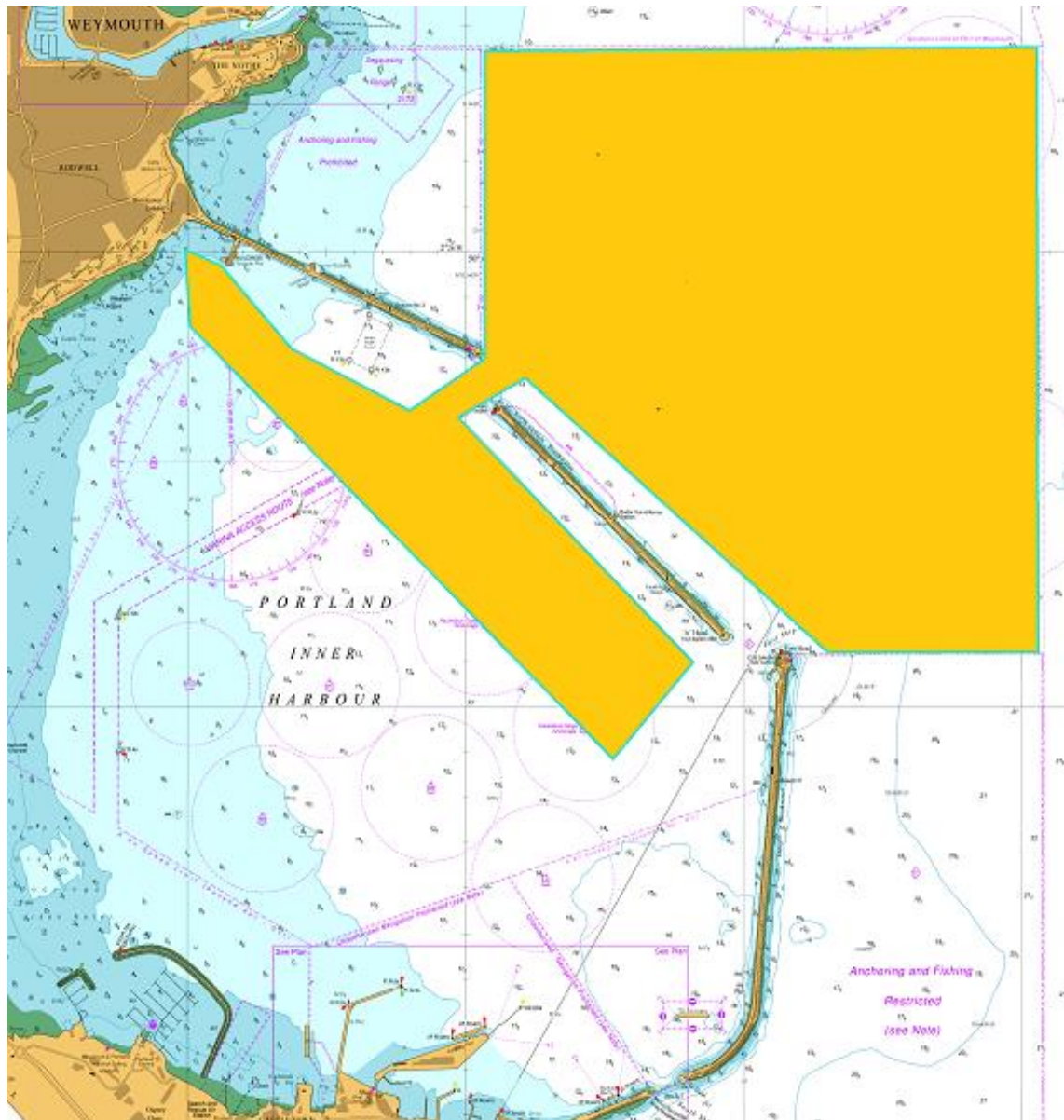
The SAFETY RHIB will be present at all times when towing operations are occurring within Portland Harbour Limits and Weymouth Bay.

VHF channel 68 will be the working channel.

At key times, during operations involving the ARCIMS platforms, the SAFETY RHIB will transmit "SECURITE" warnings on Channel 74.

A diver and Marine Mammal watch will be maintained

Mariners are requested to give all trials vessels a wide berth.



*This Notice is issued under the powers vested by the Portland Harbour Revision Order 1997.*

Captain M Shipley  
General Manager (Marine)  
3rd March 2020