



# PORTLAND HARBOUR AUTHORITY LIMITED



## Local Notice to Mariners

No 05/2022

### **DIVING INSTRUCTION & GUIDED DIVES**

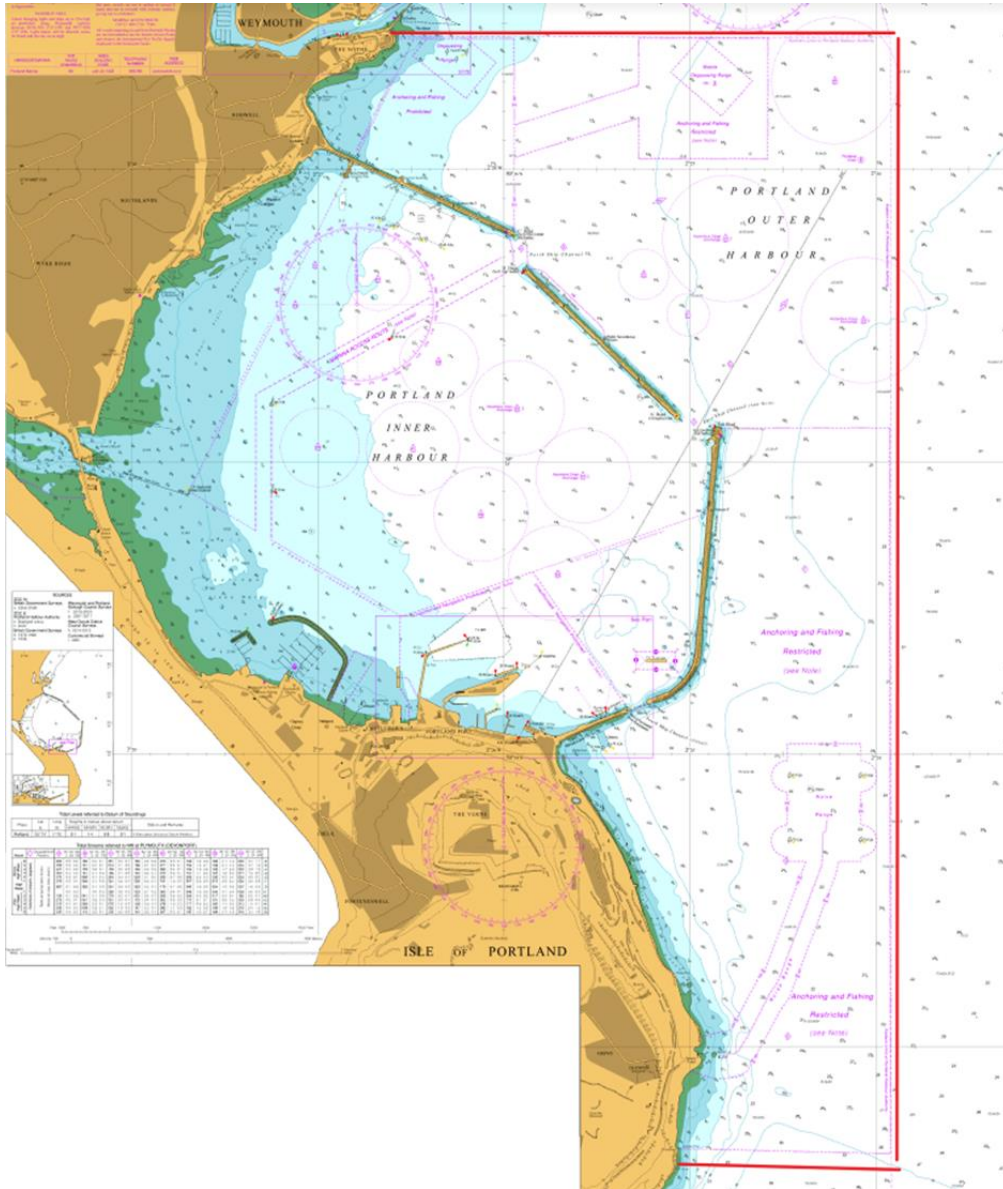
This LNTM is directed at Persons, Schools & Establishments that undertake Instruction of Diving and /or undertake Guided Dives within Portland Harbour Limits as shown in the chart extract below.

All diving for favour or reward (i.e., “at work”) is subject to the Diving at Work Regulations 1997, and its associated Approved Codes of Practice (ACOP).

Portland Harbour Authority requires that divers at work apply for written ‘Permission to Dive’ from the Harbour Authority before undertaking any dive.

“The harbour” means so much of the sea to the south of Weymouth Bay below the level of high water as is within the following imaginary straight lines:—

- (a) a line drawn east (true) from a point at Latitude 50° 36.42' N, Longitude 02° 26.50' W (the Nothe Point, Weymouth) to a point at Latitude 50° 36.42' N, Longitude 02° 23.84' W, being coterminous with the southern limit of Weymouth Harbour.
- (b) a line drawn south (true) from that point to a point at Latitude 50° 32.28' N, Longitude 02° 23.84' W.
- (c) a line drawn west (true) from that point to a point at Latitude 50° 32.28' N, Longitude 02° 25.45' W (the north point of Church Ope Cove); and
- (d) a line drawn across New Channel at its entrance to East Fleet coterminous with the western side of Ferry Bridge.



*This Notice is issued under the powers vested by the Portland Harbour Revision Order 1997.*

Captain M Shipley  
 General Manager (Marine)  
 16<sup>th</sup> February 2022

Owners, Agents, Yacht Clubs and Recreational Sailing Organisations should ensure that the contents of this notice are made known to the Masters or persons in charge of their vessels or craft.