

HARBOUR MASTERS NEWSLETTER

PORTLAND HARBOUR AUTHORITY

NUMBER ONE JANUARY 2019

A GOOD IDEA

I was recently at a meeting with the Moorings officers from our local boat clubs when somebody suggested the Harbour Authority should produce a newsletter aimed at the leisure users of the Portland Harbour. I passed this on to the Harbour Master and he said, "good idea, crack on" So here I am sharpening my pencil wondering what to say. I will try and cover lots of subjects, keeping it short and sweet and hopefully hold your interest.

Mark Rowles, Asst HM

HAMM BEACH EXCLUSION ZONE

You might have noticed orange windsocks flying in Ferrybridge Carpark and out on New Channel Beacon (Navigation light on pole off Billy Winters)

These are to indicate that an Exclusion Zone is in force off the beach, adjacent to Billy winters. Normally in force June to September.

PORTLAND HARBOUR AUTHORITY LIMITED

By virtue of section 16 of the Portland Harbour Revision Order 1997 Portland Harbour Authority Limited as the Harbour Authority gives the following Direction:

GENERAL DIRECTION
No 1 of 2018

Seasonal Exclusion Zone for Windsurfers & Kitesurfers

GENERAL DIRECTION
SEASONAL EXCLUSION ZONE FOR WINDSURFERS & KITESURFERS

1. This Direction is given to any person having or taking command, charge, management or conduct for the time being of a Windsurfing board or any surf board or similar vessel powered by a kite.

2. An Exclusion Zone has been established adjacent to Hamm Beach in the vicinity of Ferrybridge Marine & Billy Winters Cafe.

3. No person shall operate a Windsurfing board or any surf board or similar vessel powered by a kite in the Exclusion Zone when the Orange Windsock in position 50°34.879N, 002°28.158W (Ferrybridge Marine car park) is displayed, usually June to September based on levels of all activities that may take place within this area.

4. A second windsock will be displayed on New Channel Beacon in position 50°34.890N 002°27.700W

5. The Exclusion Zone means the sea area contained within the following imaginary lines:-
From a point on the shore at 50°34.879N, 002°28.158W (Ferrybridge Windsock) to a point at 50°34.885N, 002°27.899W (marked by a white buoy)
Thence to a point on the shore at 50°34.994N 002°28.224W (New Channel Lower Leading Light)

6. Failure to comply with this Direction is an offence and offenders may be prosecuted.

Chief Executive
Portland Harbour Authority Limited
1st January 2018

Owners, Operators, Agents, Masters, Yacht Club and recreational sailing organisations are requested that this Direction is made known to all persons that use Portland Harbour

Q: WHY HAS THIS BEEN PUT IN PLACE?

A: Over the last few years there has been a marked increase in the numbers of persons using the Hamm Beach. All manner of craft, including swimmers, people snorkeling, are all trying to use the same space. We have a CCTV camera at Ferrybridge and have noticed a few close calls. To reduce this risk, we have decided to introduce (through consultation with the Hamm Beach Users Group and Harbour Consultative Committee) the Exclusion Zone to keep the faster craft separated from the slower in this area.

Q: WHERE CAN I FIND OUT THE DETAILS ABOUT THE EXCLUSION ZONE

A: [CLICK HERE](#) to be taken to the Notices in Force page on our website

LOCAL NOTICE TO MARINERS LNTM

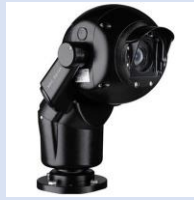
As the Statutory Harbour Authority we are required to keep mariners informed of important matters affecting navigational safety within our Harbour Limits. To this end we publish LNTM to our website and to a mailing list of people who would like to be informed. You can find current LNTM's, General Directions and Harbour Master's Directions [HERE](#).

NEW SPECIAL MARK BUOY

Over the years, several windsurfers have hit their fins on the remains of the Whitehead Pier. This obstruction is annotated on the local harbour chart 2268. To aid with the windsurfers situational awareness we were asked by the Hamm Beach Users Group if there was a possibility of marking the end of the pier. This new mark has been approved by Trinity House and will shortly be placed in position.



CCTV



We have a number of cameras placed around the port premises and also in prominent areas around the harbour. One of these cameras has the ability to automatically track a vessel that has been selected by the operator. The system has been installed to enhance the water space management and safety of harbour users.

No person is permitted to bathe or swim within; the main fairways; and the controlled area, without the written permission of the Company

NEW BYLAWS

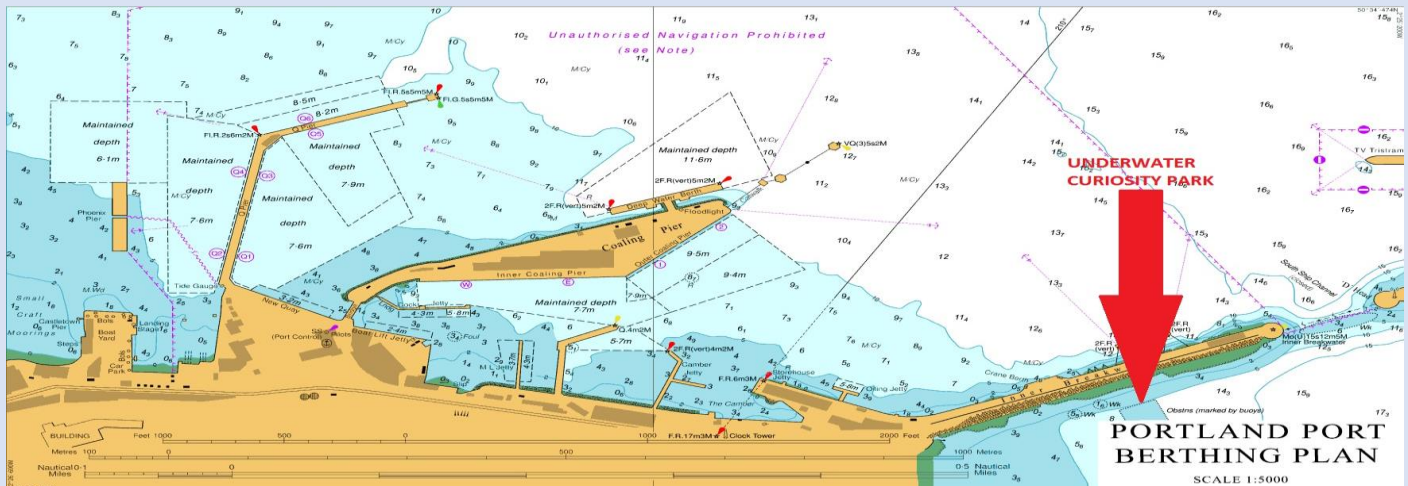
Recently some new bylaws came into force. These were mostly directed towards the security and running of the Port Estate although some affect the leisure harbour user. *No person is permitted to bathe or swim within; the main fairways; and the controlled area, without the written permission of the Company.* This means that swimming across the port entrances is now prohibited.

UNDERWATER CURIOSITY PARK

An area in Balaclava Bay has seen a dive park established in it. The UCP is marked by four yellow special marks. It is within the 6-knot area and diving here is covered under the harbour Authority's Dive Permit system.



You can apply for a permit [HERE](#)



PORT DEVELOPMENT

There are lots of new developments taking place in and around the port. To keep up to date, you can check out our press releases on the port's website.

<http://www.portland-port.co.uk/news>

BREAKWATER CLEAN-UP

The problem with plastics and how they affect Marine life has been prominent in the press of late. With this in mind the port has been trying to clean up their patch and it was suggested that we might like to start cleaning the breakwaters. To this affect, most of the port staff were castaway on Fort



Head for the afternoon. After laboring under a hot sun, the catch for the day was added up. In total there were 15 one tonne bags full of plastics of various types. This was a great success and future breakwater clean-ups are in the planning.



Checking out the wildlife, they get everywhere!!



“Don't forget to get your Port & Harbour Dues and Permits in place for 2019”

HARBOUR INCIDENTS

IS MY MOORING OK?

A few questions about moorings to ask yourself?

Has your mooring been thoroughly checked by diver or lifted in the last year?

Is it marked with boat name or mooring number?

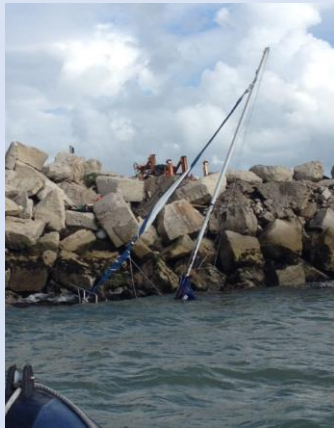
Are all your shackles moused or welded?

Will I be insured if my boat breaks adrift and my mooring hasn't been serviced by a qualified person?

Is my ground weight big enough for the day of extreme wind?

ALL CHART EXTRACTS

“© Crown Copyright and/or database rights. Reproduced by permission of the Controller of Her Majesty's Stationery Office and the [UK Hydrographic Office](#). NOT TO BE USED FOR NAVIGATION”

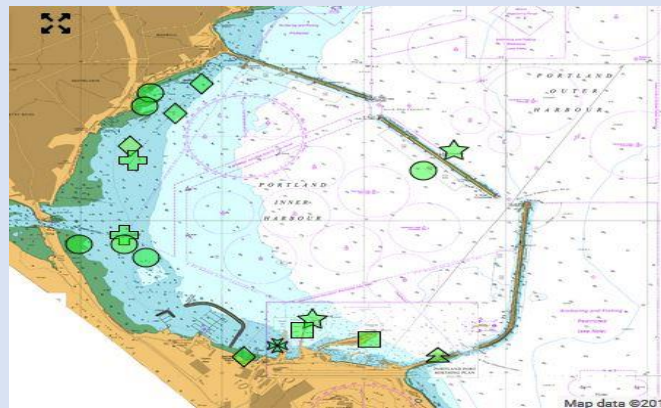


Don't let this happen to you,
get your mooring checked
regularly.

In 2018 we logged 18 incidents, These ranged from illegal laying of nets to a man overboard from a commercial ship. Our most common recurring incident is the breaking adrift and grounding / sinking of yachts.

The Harbour Authority is working with the Moorings Officers of local clubs with a view to put in place a process to reduce the numbers of boats going adrift. We are hoping to try and come up with a minimum requirement for moorings and their management.

INCIDENT LOCATIONS 2018



PROSECUTIONS (in the other dock)

The Harbour Authority recently took 3 persons to court for [Landing on the Breakwater without the Harbour Masters permission](#). Each man was fined £100 with 2 men paying costs of £40. Their presence and activities were recorded on CCTV and Port Police were on scene in a very short time. The breakwaters are approx. 7Km long and all can be seen and recorded.

January has seen 3 in court for Trespassing on the port. Each were fined a total of £100.

Also 1 person was fined £240 for Kitesurfing without a Kitesurfing Permit and Kitesurfing within the Exclusion Zone.

Other recent prosecutions

2 persons (spear) fishing within the Controlled Area

2 persons (potting) fishing within the Controlled Area

USEFUL LINKS

[PORTLAND HARBOUR AUTHORITY WEBSITE](#)

[LOCAL LIVE WIND](#)

[BUY HARBOUR DUES AND PERMITS](#)

I hope this newsletter kept you involved. If you have any items you would like to see in a newsletter, then I am all ears. And if you would like to subscribe to this newsletter, drop me a email at:-

Mark Rowles - Assistant Harbour Master <mailto:m.rowles@portland-port.co.uk?subject=HARBOUR MASTER'S NEWSLETTER>